

# THE PRESENT AND FUTURE POSSIBILITIES OF LANDSCAPE SCALE CONSERVATION: APPLCC ETHNOGRAPHIC STUDY

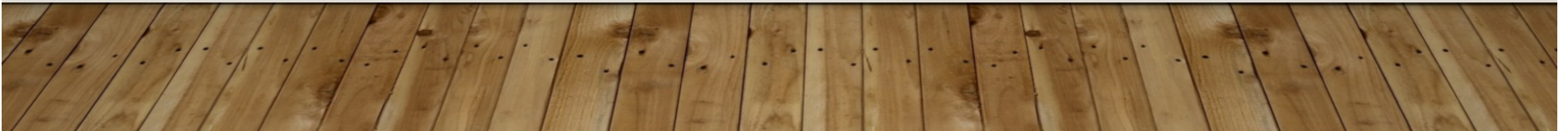
---

MADDIE BROWN

APPLCC LANDSCAPE CONSERVATION FELLOW

POSTDOCTORAL RESEARCHER, PENN STATE  
UNIVERSITY

APRIL 19, 2018



# PRESENTATION OVERVIEW

---

- Study Motivation and Methods
- Natural and Cultural Resources
- Successes
- Challenges
- Future directions
- Online dashboard:  
<https://maddiebrown.github.io/LCC/LCChome.html>



# STUDY MOTIVATION

---

- LCCs are uniquely designed to tackle natural and cultural resource conservation at the landscape scale
- Partnership transition
- How can we capture the lessons learned from the previous iteration of the AppLCC to inform future regional conservation efforts?

# METHODS

---

- Participant observation from July 2017 to March 2018
- 18 semi-structured interviews with AppLCC partners
- Thematic coding and qualitative analysis with NVivo
- Quantitative analysis and figures with R

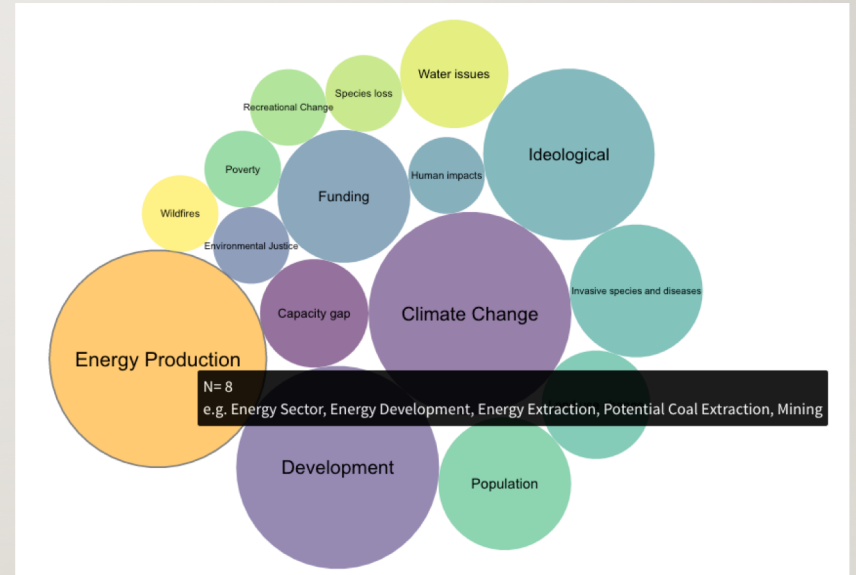
# NATURAL RESOURCES

---

- Primary tangible outputs
  - Landscape conservation design
  - Riparian Restoration Tool
  - Species Vulnerability Assessments
  - Cave and karst mapping
- Intangible outputs
  - Landscape-level thinking
  - Plan for the future
  - Integration of cultural and natural resources
  - Partnership itself



# THREATS TO CONSERVATION



# CULTURAL RESOURCES

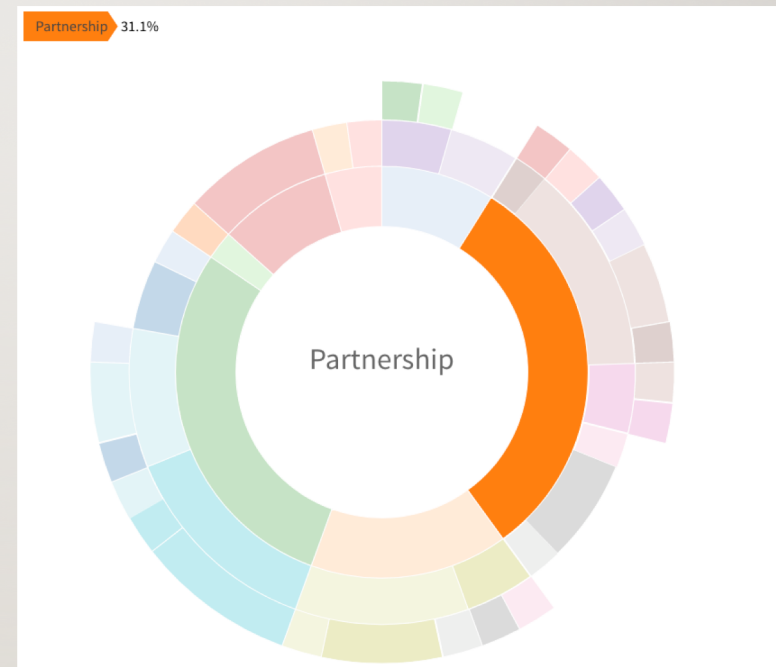
---

- AppLCC uniquely integrated cultural and natural resources
- Spatial modeling by PSU team
- Tennessee River Basin Report Card with UMCES
- Keen interest in future work in this area
- 60% of interviewees' work involves cultural resources
- Threats: 1) energy development, 2) commercial and residential development, 3) climate change, and 4) cultural and economic change

# MAIN SUCCESSES OF APPLCC

---

- Partnership
- Tools
- Science
- Cultural Resource Integration
- Information/Communication
- Funding
- Conservation Outcomes
- Interactive graphic

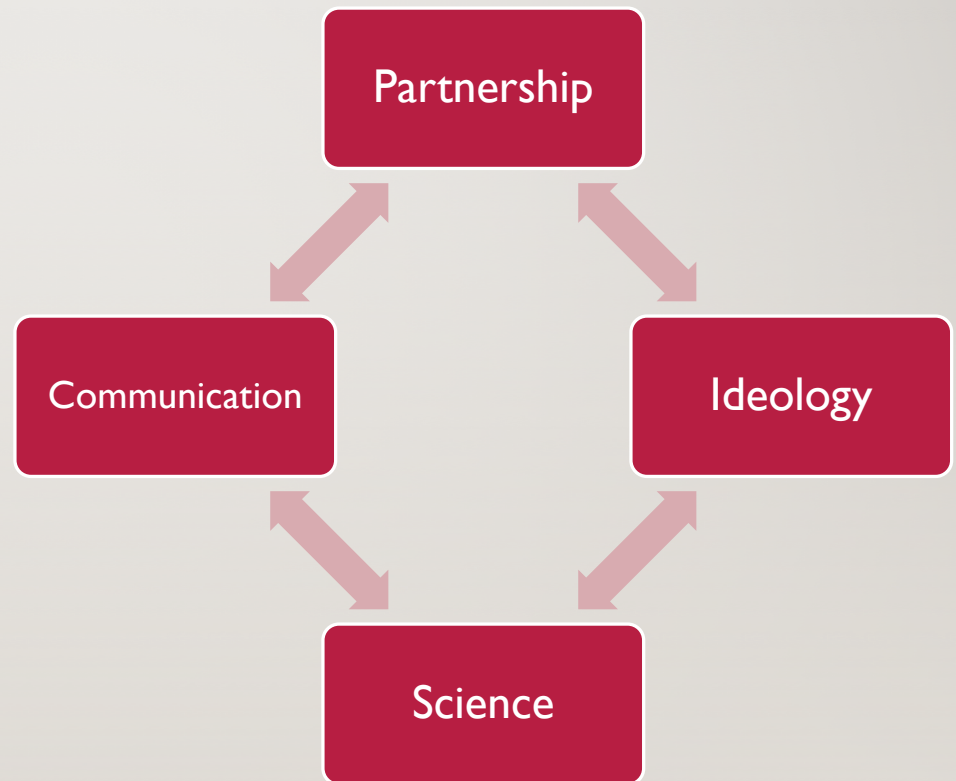




# CONSERVATION OUTCOMES

---

- 94% (n=16) felt LCC model has advanced conservation
- 92% (n=12) believe LCCs play unique role in conservation



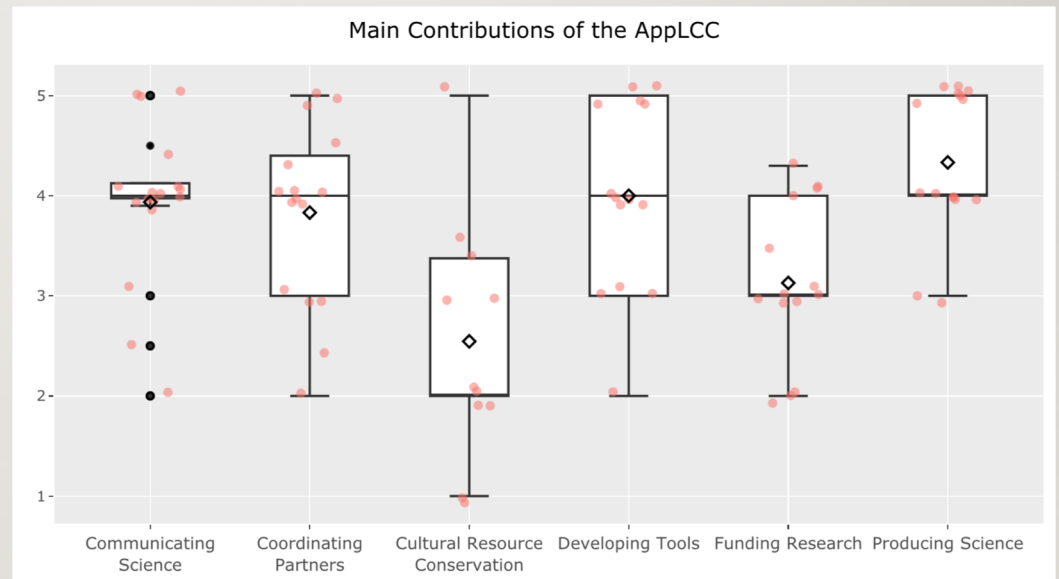




# WHAT IS THE ROLE OF THIS PARTNERSHIP?

---

- Conservation support
- Information delivery
- Implement conservation
- Fundamental science





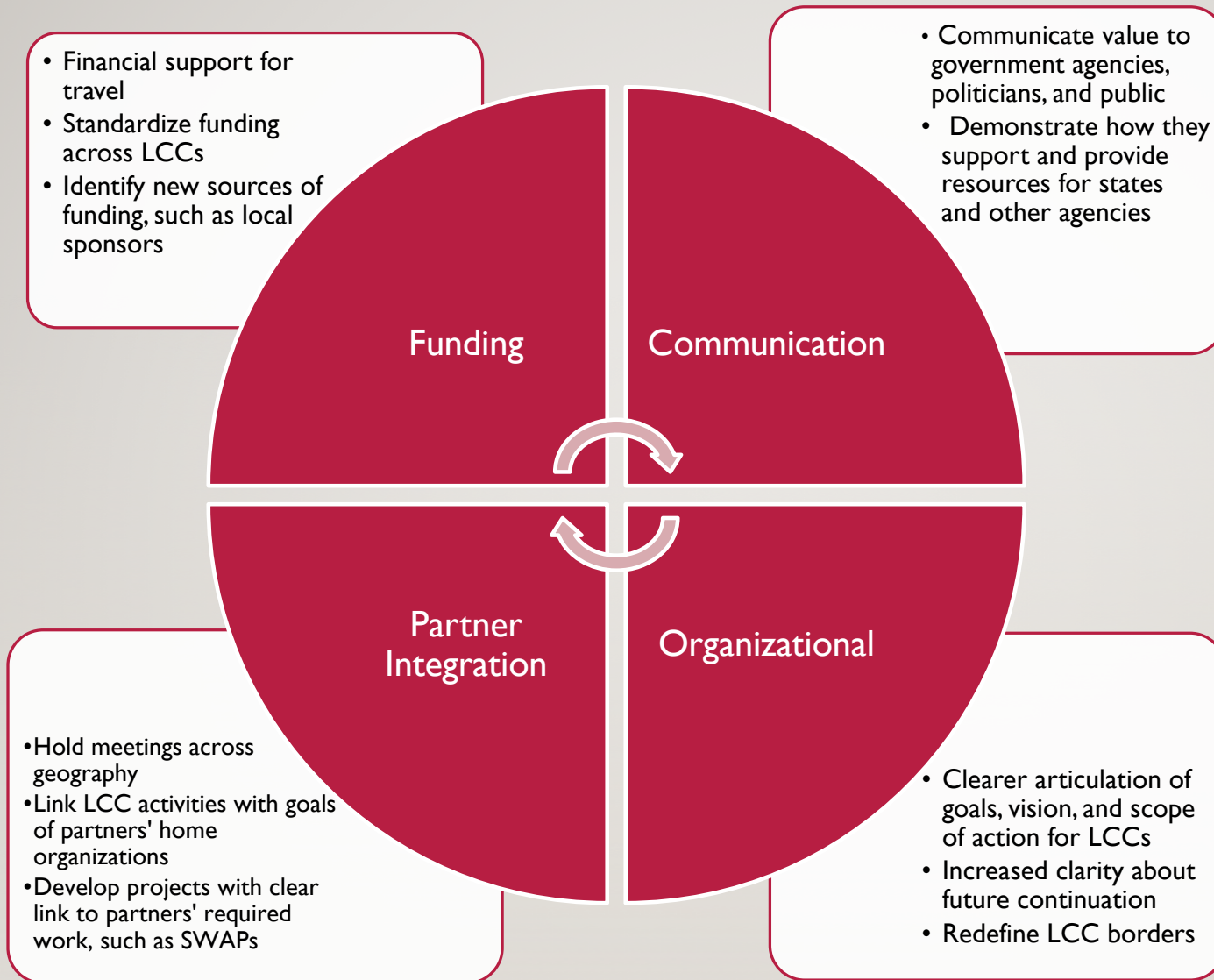
# CHALLENGES FOR THE PARTNERSHIP

---



- LCC borders
- Staffing and funding level
- Uncertainty
- Partner roles
- Decision-making authority

# RECOMMENDATIONS



# FUTURE FOCUS

---

- Landscape-level issues
- LCD
- Integrate Cultural Resources
- Outreach
- Community Projects



# FUTURE IMPROVEMENTS

---

- Stable funding
- Outreach and communication
- Articulating partnership purpose
- Broaden scope of LCC projects
- Expanding membership
- Clearer metrics to track partnership progress

## Dimensions of success

### Partnership

- Partnership diversity
- Partner engagement level
- Representation across multiple scales: local, regional, state, industry, etc.

### Capacity Gaps

- Builds on regional capacity and fills critical gaps
- Partners achieve goals more efficiently and by spending fewer resources
- Unique contributions of partnership

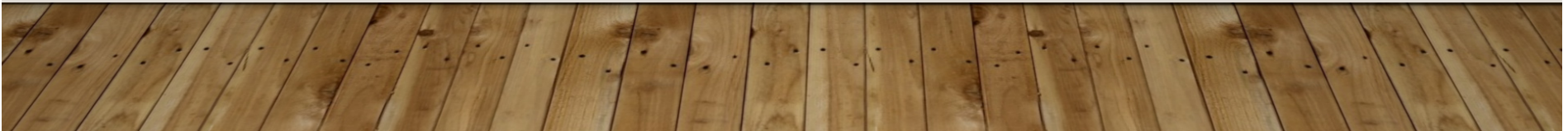
### Advance Conservation

- Integrate tools into regional conservation planning
- Implement conservation using LCC products
- Change conservation decisions as a result of LCC work

### Other

- Reduce redundant efforts in region
- Connect available funds to projects in region
- Engage decision makers
- Collaborative science production

MEASURING FUTURE  
SUCCESS

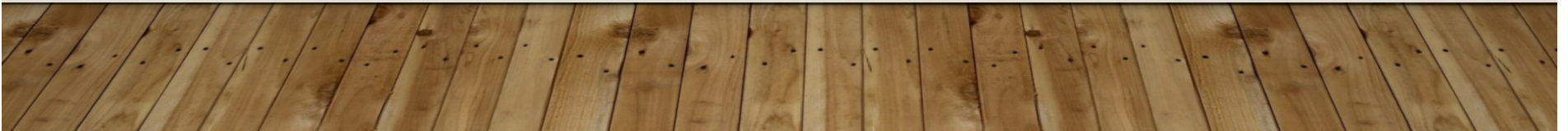


# BROADENING THE PARTNERSHIP

---

- Local government
- Water districts
- County commissioners
- Railroad companies
- Land trusts
- Local groups
- State forestry agencies
- Trout Unlimited
- Rocky Mountain Elk Foundation
- Municipalities
- Tribal governments
- Business organizations
- Mining organizations
- Timber companies
- CSCs
- USGS
- ACOE
- Universities
- Land trusts
- Nonprofits
- SHPO

[Additional information](#)





# CULTURE OF PARTNERSHIP

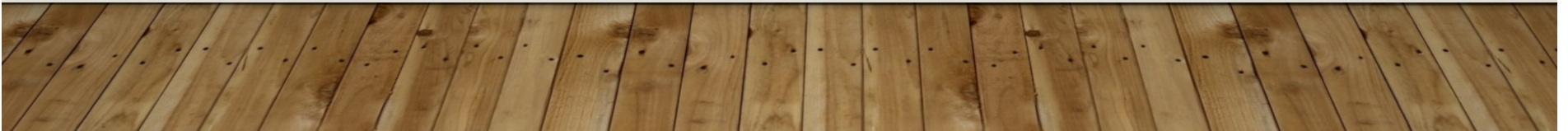
---

- Hardworking
- Resourceful: making 'stone soup'
- Collaborative
- Transparent

# CLOSING THOUGHTS

---

- AppLCC has advanced landscape-level thinking
- Uniquely worked towards integrating cultural and natural resources
- Fostered the development of new collaborative partnerships and information sharing
- Challenges faced by LCCs are opportunities to productively re-envision a regional conservation partnership



# ACKNOWLEDGEMENTS

---

- This study would not have been possible without generous input from AppLCC partners and interview participants, Jean Brennan, Dan Odess, and Tim Murtha.
- Written report and executive summary are co-authored with Dr. Tim Murtha